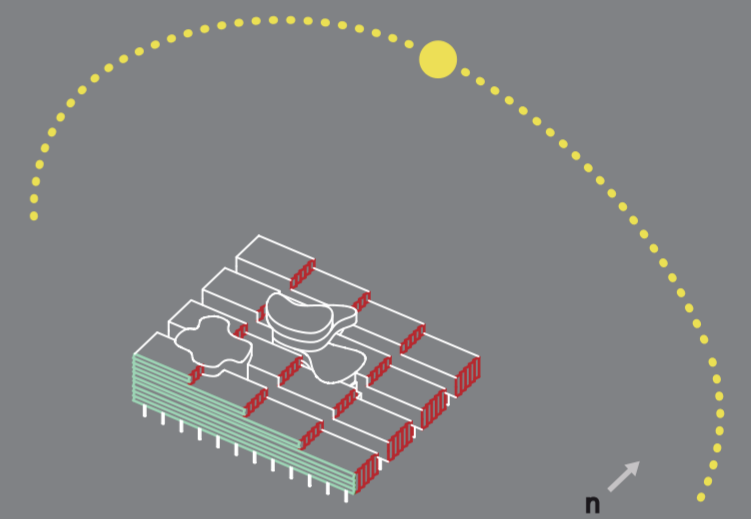


- solar protection
- water collection
- solar gain
- wind shadow

roof functions

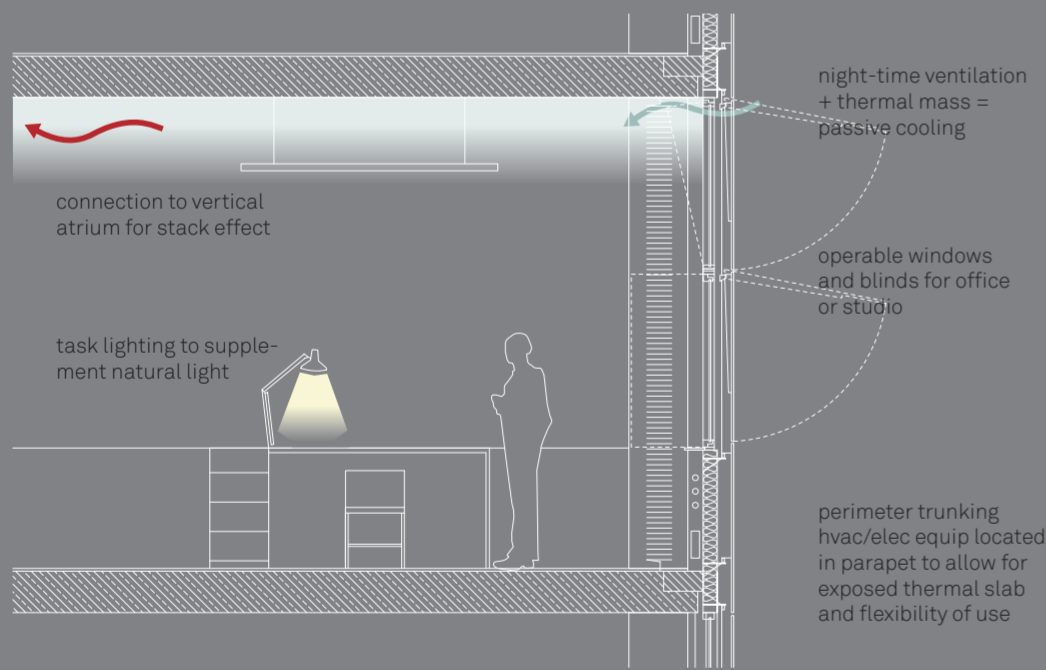


sun louvres

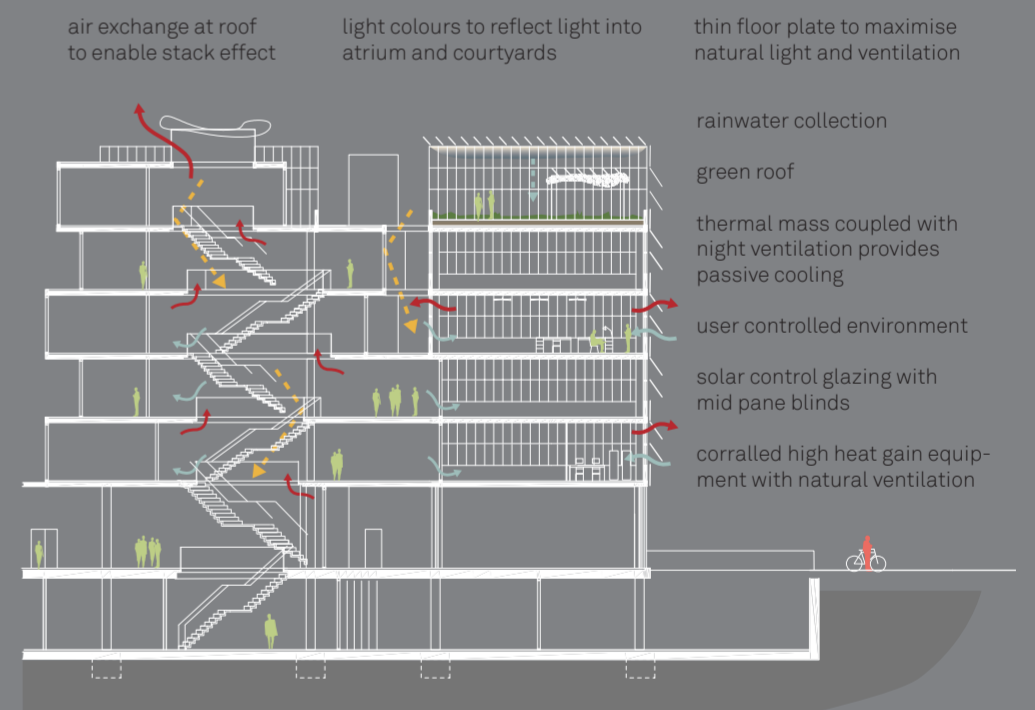
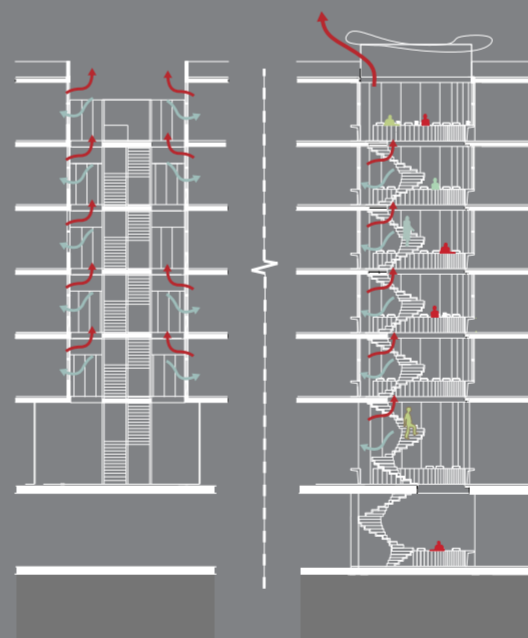


“ sustainability

I think a new building should be an example of sustainability. We are talking so much about ecological architecture, I think it would be really useful to have a 1:1 sample where one can see how things work (or how they don't work). There should be some information on energy consumption and carbon emission. ”



section detail



sustainable-section

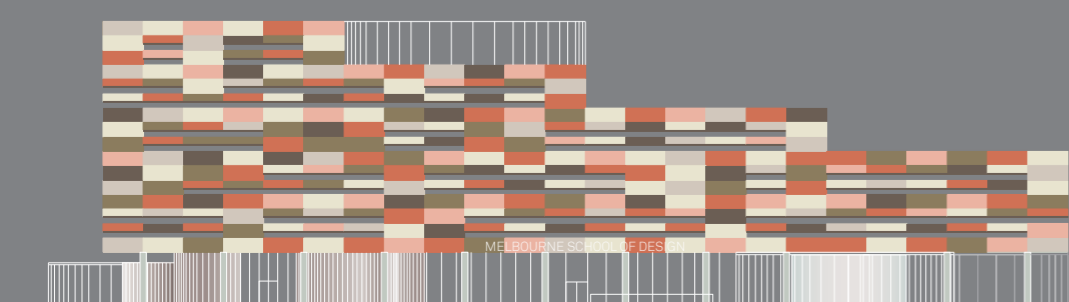


reference buildings

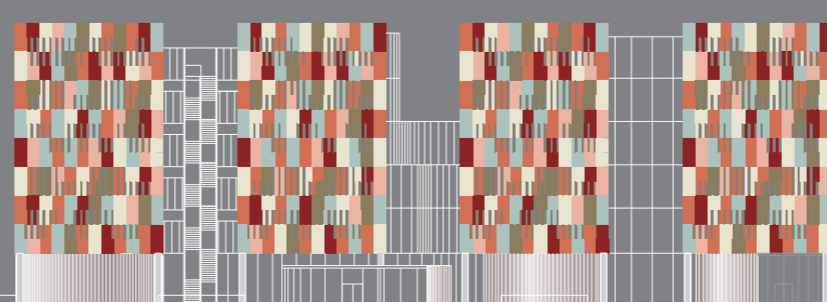


“ natural light

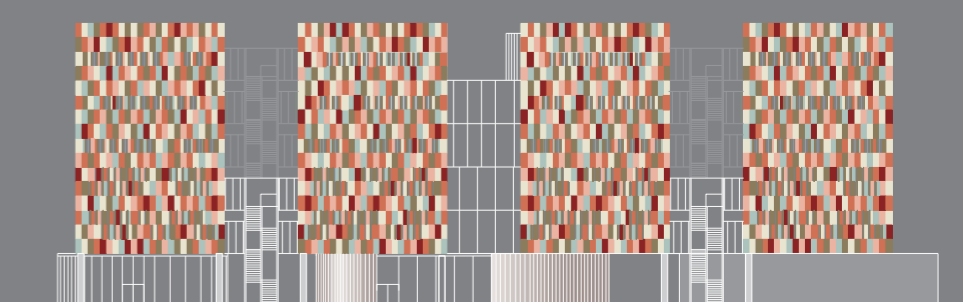
I hate to be in electric light all day; I really want some natural light; that's particularly important when you stare into your computer screen all day long. ”



south elevation



west elevation



east elevation